

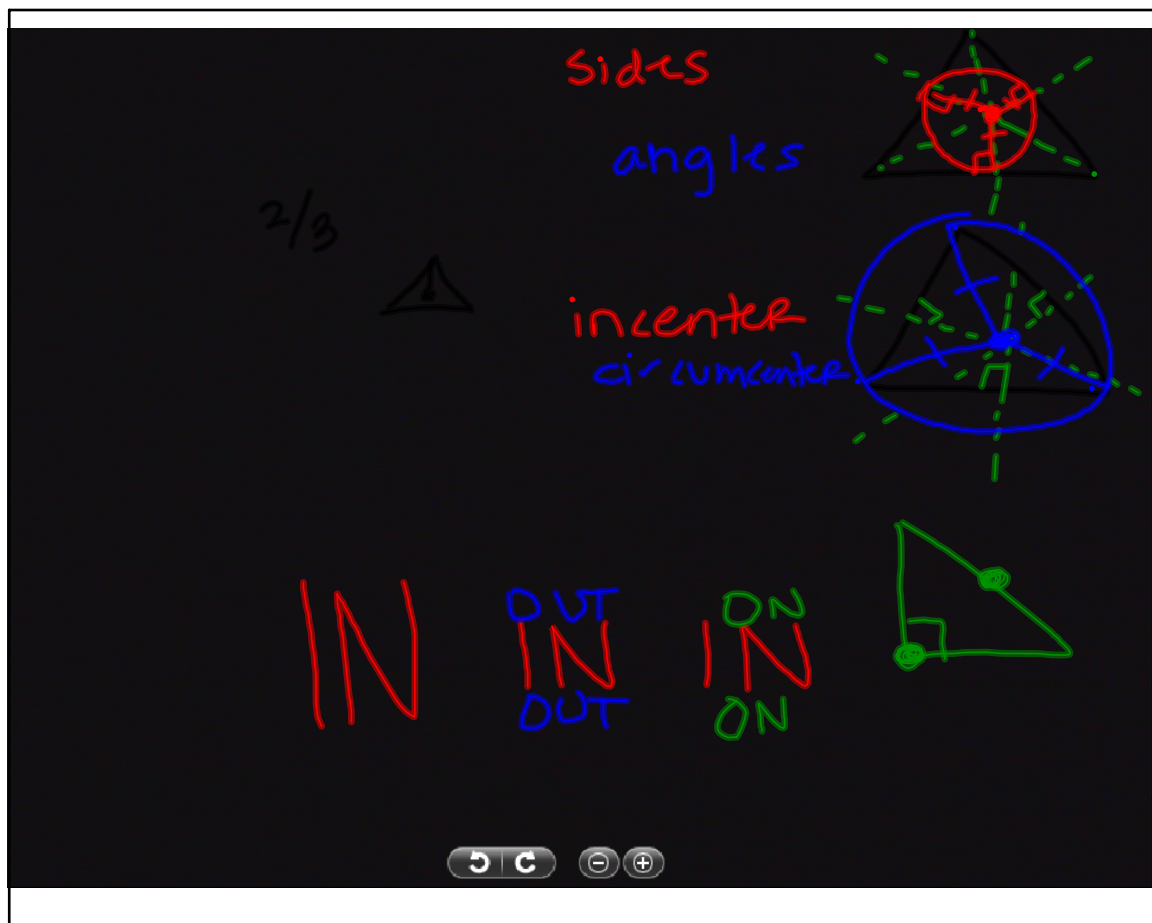
Dec 6-11:44 AM



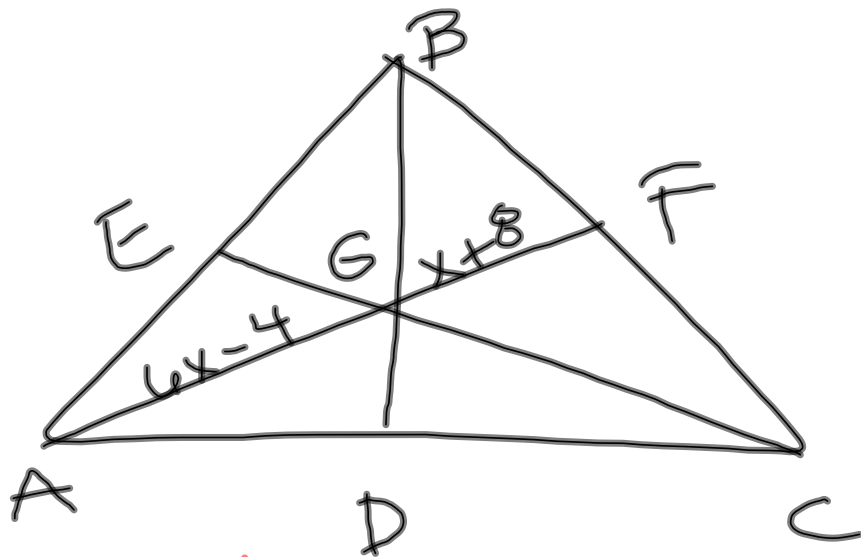
Dec 6-9:51 AM

1. The perpendicular bisector is the segment that bisects each side of the triangle at a right angle.
2. The incenter is the intersection of all three angle bisectors of a triangle.
3. The centroid is the intersection of all three medians in a triangle.
4. The angle bisector is the segment that extends from a vertex to the opposite side and cuts the angle in half.
5. The orthocenter is the intersection of the altitudes of a triangle.
6. The altitude is the segment that extends from the vertex of a triangle to the opposite side at a right angle.
7. The circumcenter is the intersection of the perpendicular bisectors.
8. The median is the segment that extends from the vertex of a triangle to the opposite side at the midpoint.

Dec 6-8:59 AM



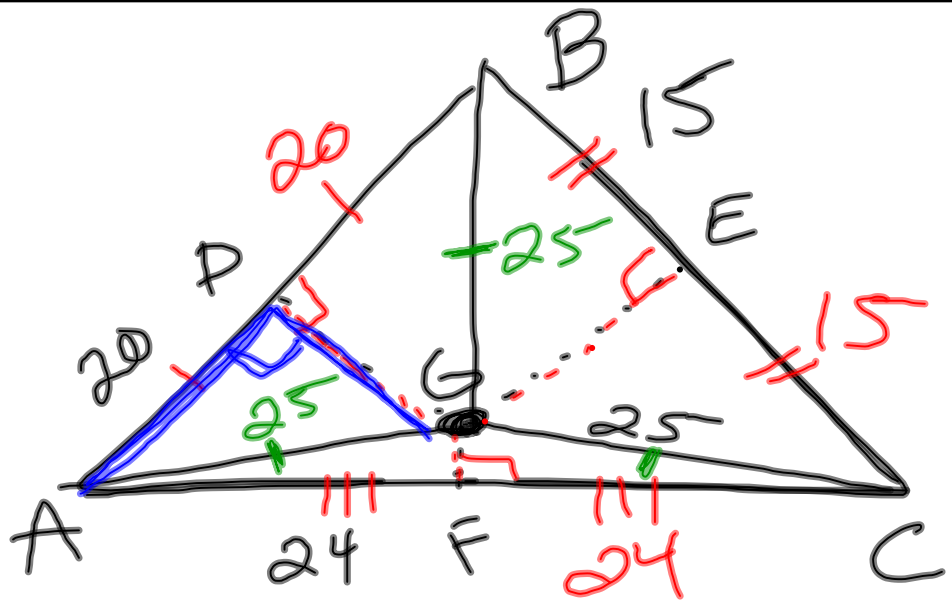
Dec 6-9:15 AM



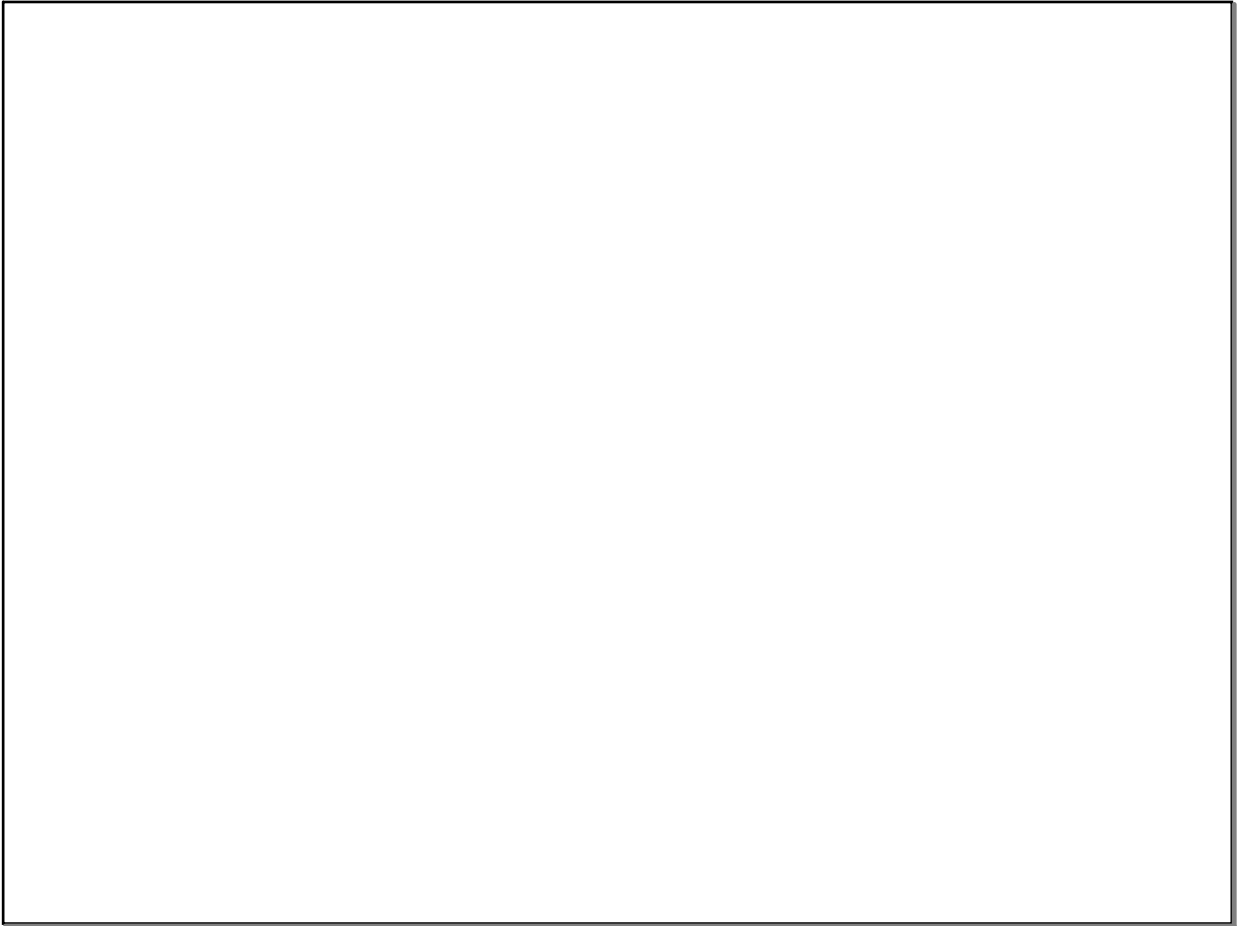
$$x+8 = \frac{1}{2}(6x-4)$$

$$x+8 = 3x-2$$

Dec 6-9:43 AM



Dec 6-9:45 AM



Dec 6-12:22 PM